

# Spatial Data @ UMN



# Data Core Initiatives

Provide a federated system to make spatial data discoverable, accessible, archived, and preserved.

Provide storage for spatial data, as well as supporting spatial services.



[Getting Started](#)

[Search](#)

[Cart \(1\)](#)

[Save Image](#)

[Print](#)

[Basemap v](#)

SEARCH

☒ Limit results to visible map area

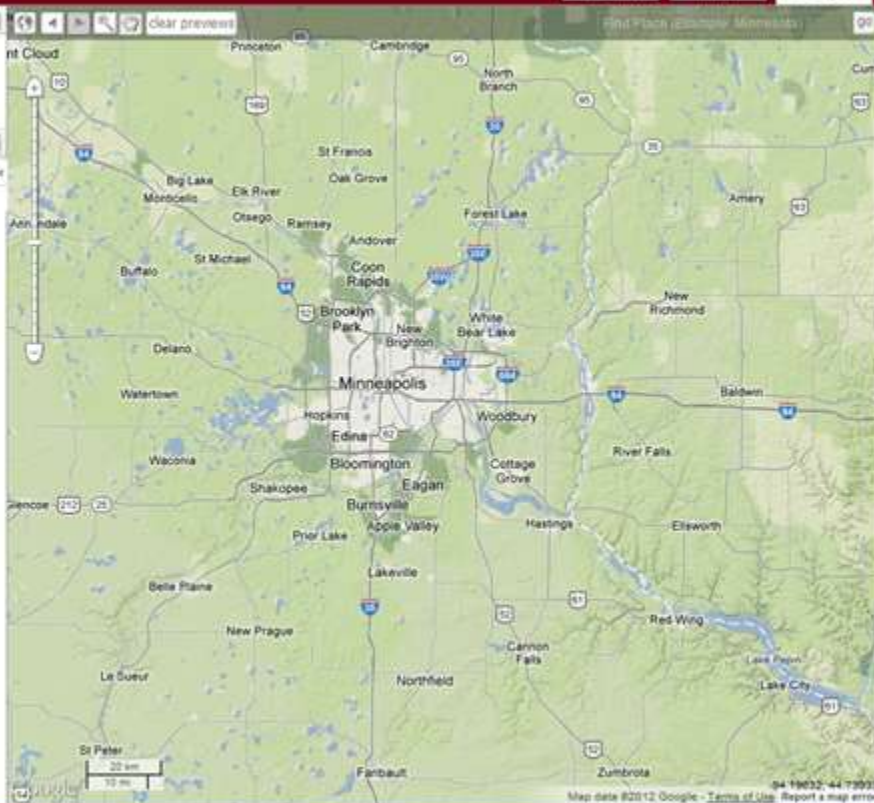
[advanced options](#)

1 RESULTS by Relevancy

Columns

Type Name Originator Rep Preview

☒ Generalized Land Use 2010 for the Ty MetroGIS



GeoData@University of Minnesota

50.17.227.21

UNIVERSITY OF MINNESOTA  
Driven to Discover™

Reset User Guide Highlights Login

Getting Started Search Cart (0)

Save Image Print Basemap

SEARCH

Search for data layers... Search

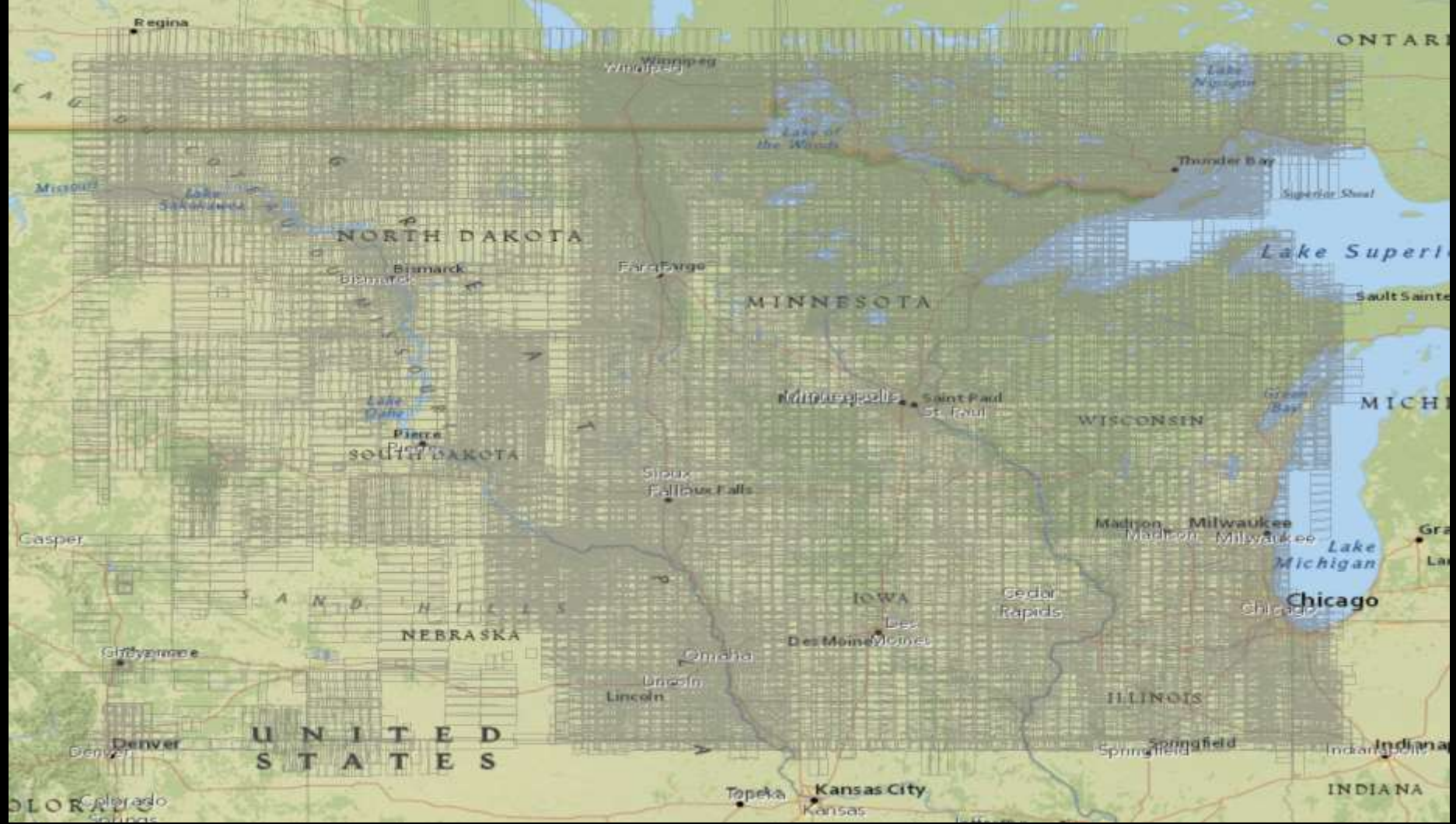
☒ Limit results to visible map area [Advanced Search](#)

47 RESULTS by Relevance

Type	Name	Originator	Key	Preview
Mount	Mount Harnsworth	United States	Key	Preview
Mount	Mount Olympus	United States	Key	Preview
Mount	Mount Melbourne	United States	Key	Preview
Glacier	Ernie Glacier	United States	Key	Preview
Hills	Liberty Hills	United States	Key	Preview
Glacier	Carlson Glacier	United States	Key	Preview
Cape	Cape Hallett	United States	Key	Preview
Mount	Mount Murchison	United States	Key	Preview
Island	Franklin Island	United States	Key	Preview
Range	Georgists Range	United States	Key	Preview
Mountains	Freiberg Mountains	United States	Key	Preview
Cape	Cape Adare	United States	Key	Preview
Range	Census Range	United States	Key	Preview
Island	Cushman Island	United States	Key	Preview
Cape	Cape Selborne	United States	Key	Preview
Mount	Mount Joyce	United States	Key	Preview
Mount	Blackburn Nunatak	United States	Key	Preview
Mount	Mount Discovery v1	United States	Key	Preview
Mount	Mount Discovery v2	United States	Key	Preview
Mount	Mount Hanna	United States	Key	Preview
Mount	Mount Sica	United States	Key	Preview

Connecting to 50.17.227.21...

0731492 06247 2008 2014



Spatial Data Analyst/Curator



# **CSW**

Catalog Services for the Web



## Federated Automated Solr Metadata Harvester

Through funding from the Alfred P. Sloan Foundation, Tufts University is currently developing a Federated Automated Solr Metadata Harvester: a cloud-based, Solr geospatial metadata clearinghouse. This centralized platform will use automated federated metadata harvesting protocols and will support multiple metadata formats to facilitate federated metadata sharing through the OGP.

---